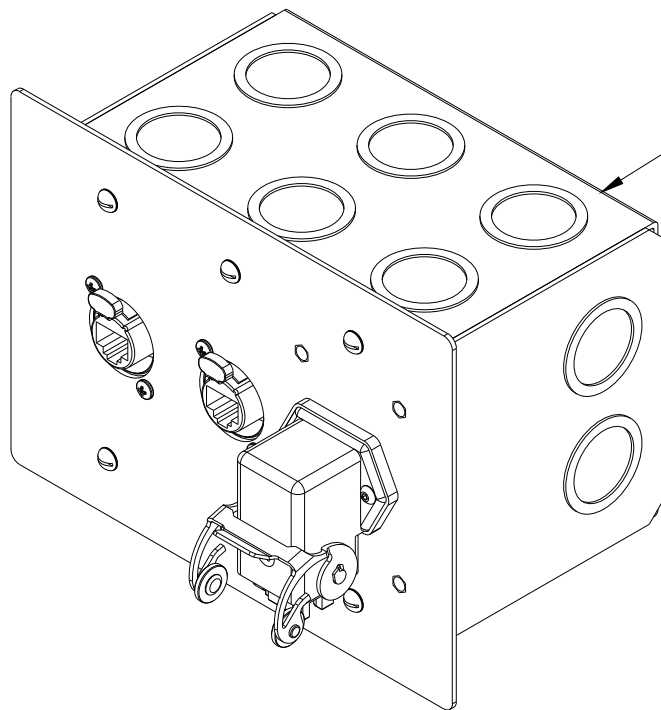
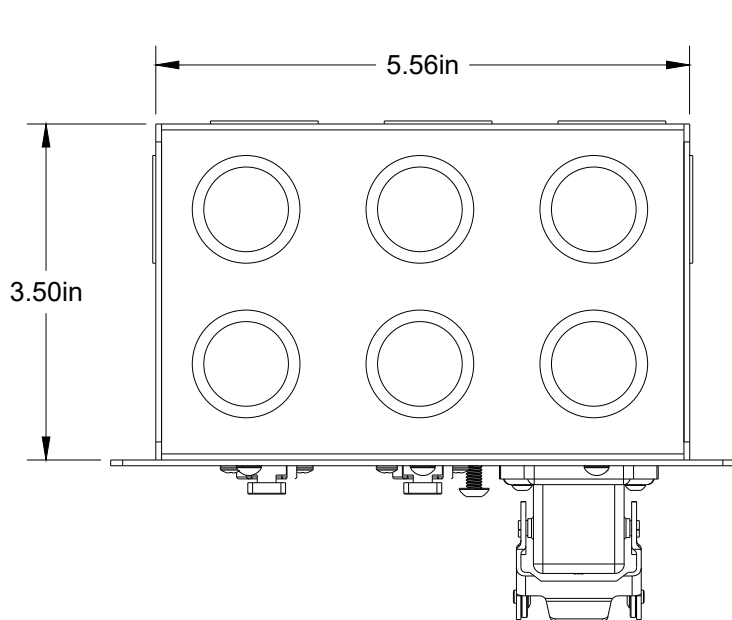


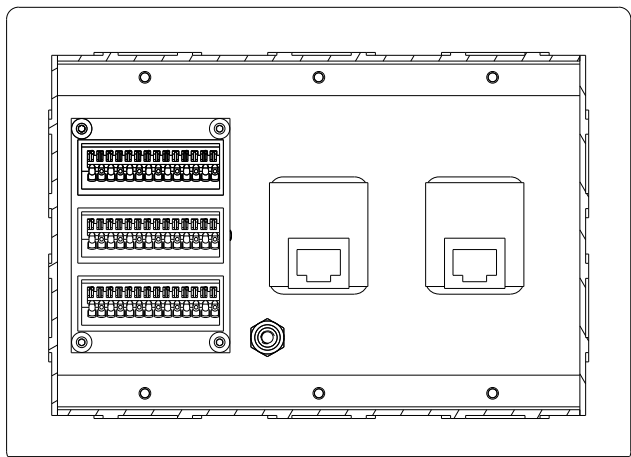
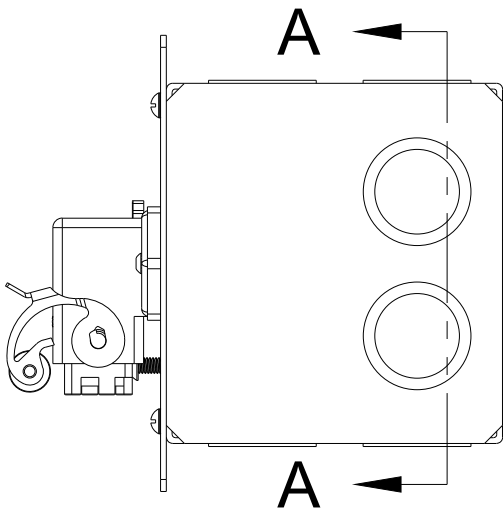
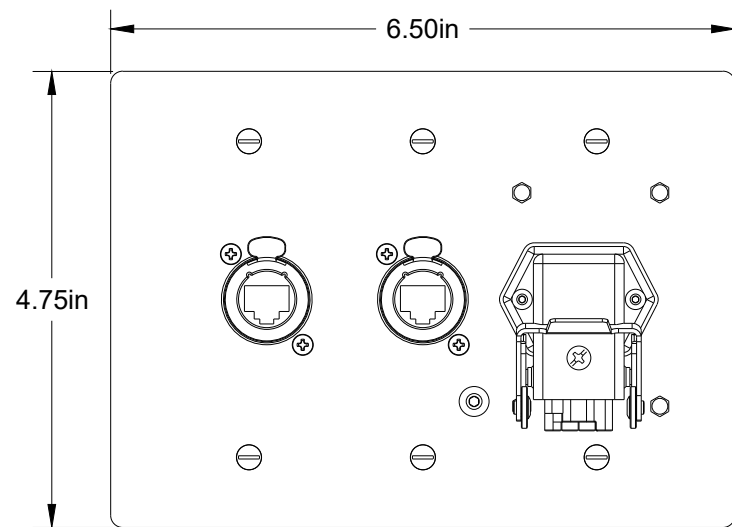
| Rev. | Drawn | Date | Revisions |
|------|-------|------------|------------------|
| A | MRW | 08/24/2022 | Notes and labels |
| | | | |
| | | | |
| | | | |

tolerances:
xx : $\pm \frac{1}{16}$ "
.xx : ± 0.010
.xxx : ± 0.003

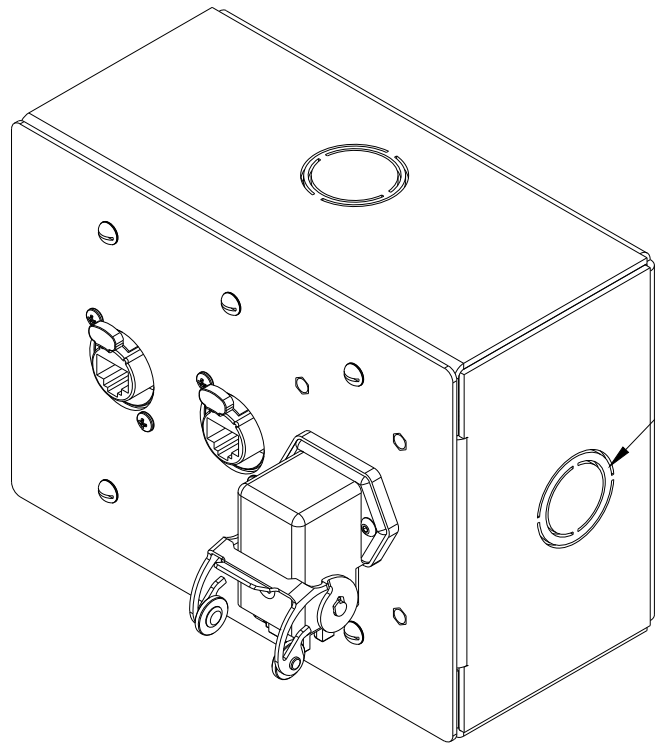
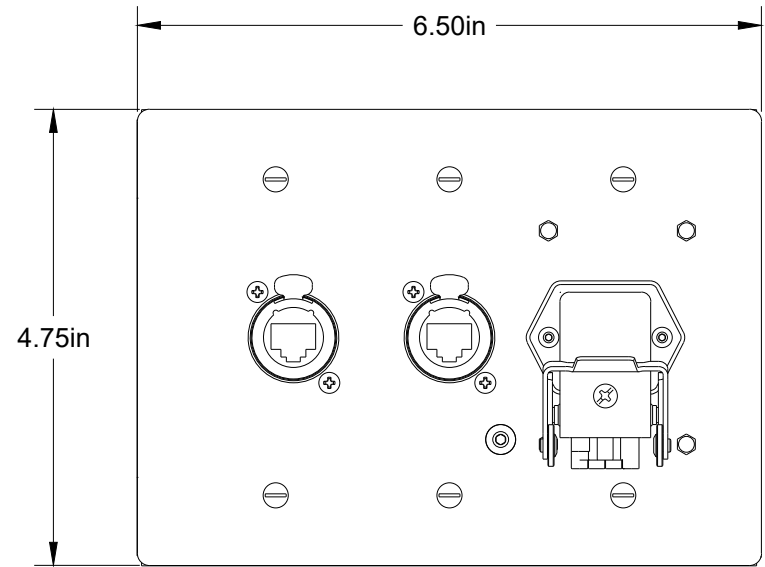
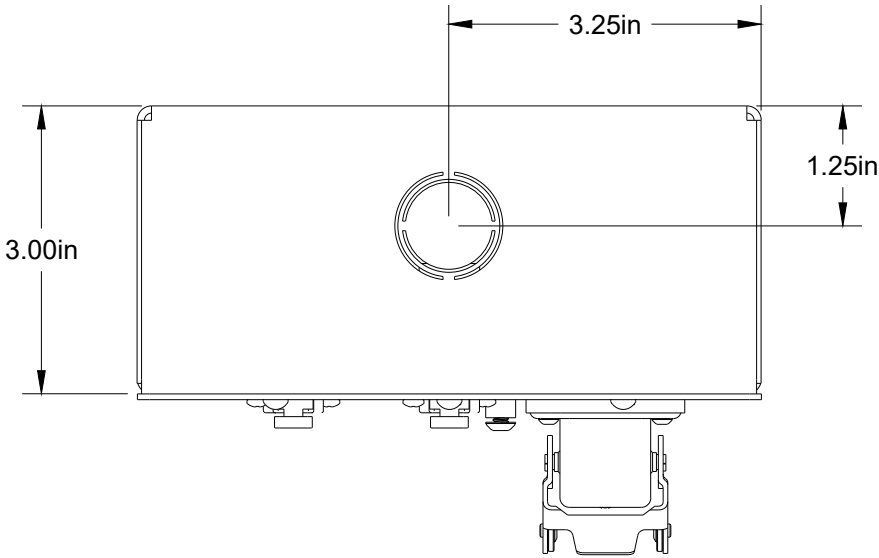
the information
contained in the
drawing is the
property of creative
conners inc.



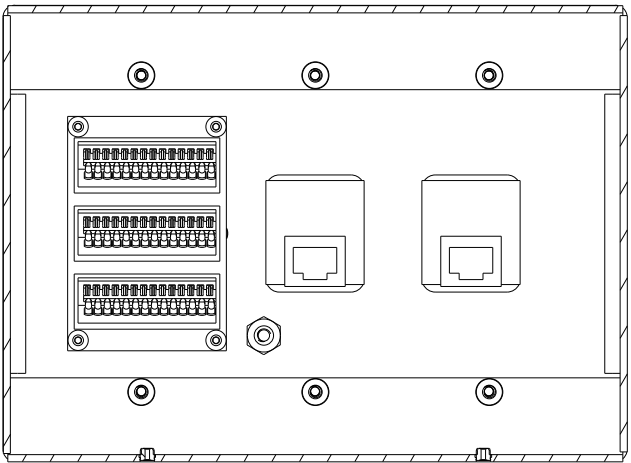
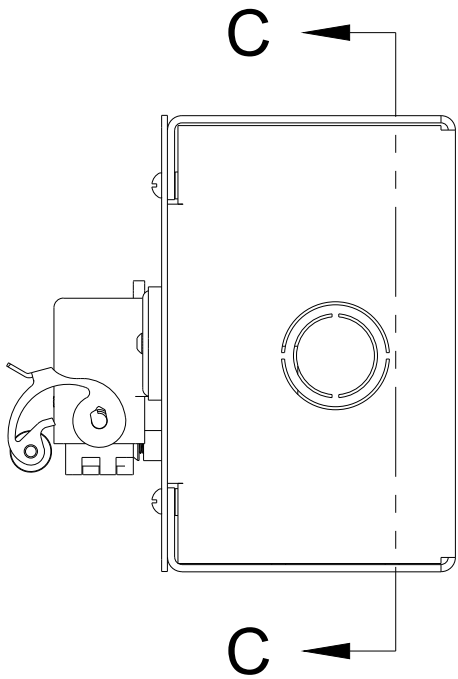
STANDARD 3 GANG BACK BOX



INTERIOR VIEW



$\frac{3}{4}$ " or 1" KNOCK OUT
4 SIDES



Interior View

| Rev. | Drawn | Date | Revisions |
|------|-------|------------|------------------|
| A | MRW | 08/24/2022 | Notes and labels |
| | | | |
| | | | |
| | | | |

tolerances:
xx : $\pm\frac{1}{16}$ "
.xx : ± 0.010
.xxx : ± 0.003

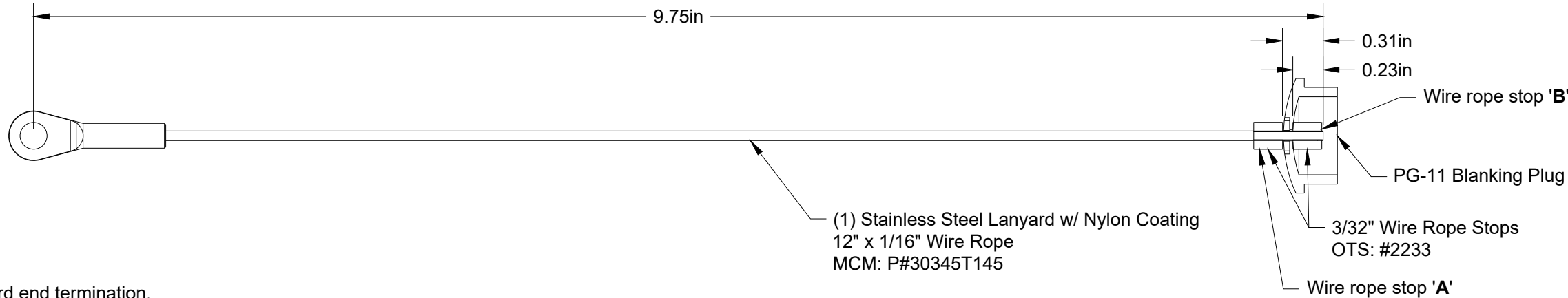
the information
contained in the
drawing is the
property of creative
conners inc.

| Rev. | Drawn | Date | Revisions |
|------|-------|------------|--------------------------|
| A | KRG | 03/25/2020 | Updated Lanyard Hardware |
| B | KRG | 05/04/2020 | Updated Process |
| C | MRW | 08/24/2022 | Updated Notes |

tolerances:
xx : $\pm \frac{1}{16}$ "
.xx : ± 0.010
.xxx : ± 0.003

the information
contained in the
drawing is the
property of creative
conners inc.

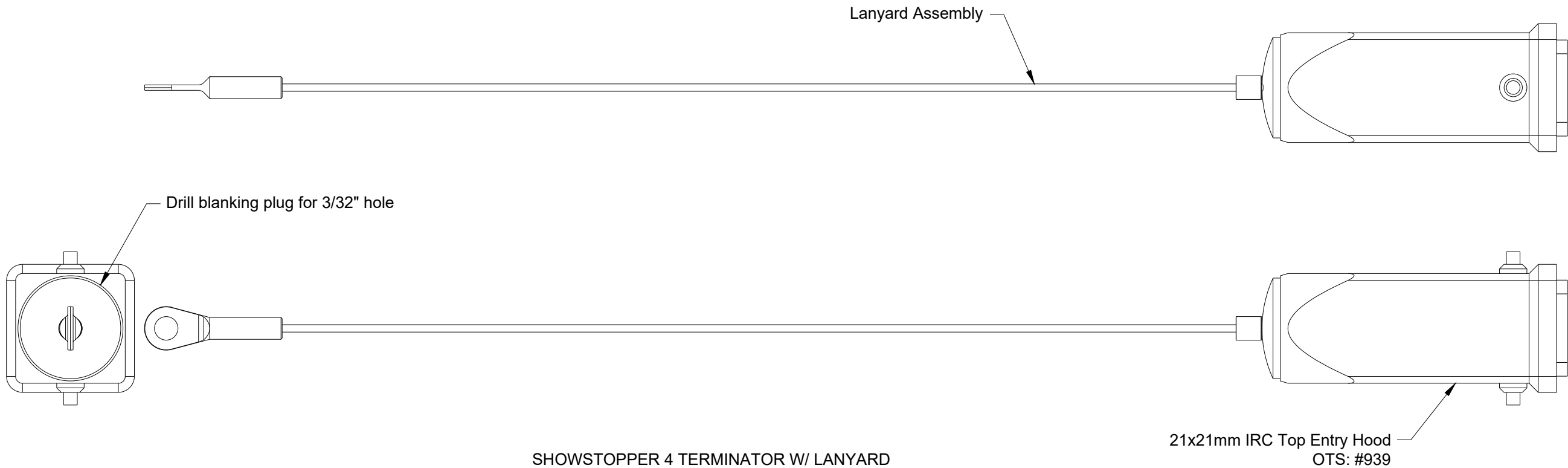
****IMPORTANT****
See Process List for order of
operations for assembly



LANYARD DETAIL VIEW

PROCESS:

1. Cut off second lanyard end termination.
2. Slide on wire rope stop **A**, PG-11 plug and wire rope stop **B**.
3. Position wire rope stop B flush to the end of the wire rope and crimp wire rope stop B.
4. Slide down PG-11 plug, and wire rope stop **A** until plug is seated against wire rope stop **B**.
5. Crimp wire rope stop **A**.



SHOWSTOPPER 4 TERMINATOR W/ LANYARD
3 VIEWS

21x21mm IRC Top Entry Hood
OTS: #939